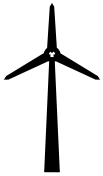




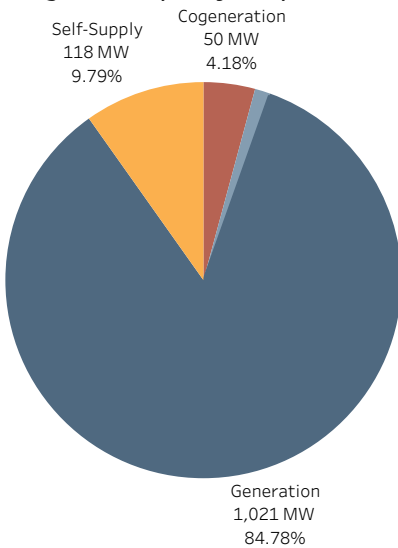
## Power sector analysis at a regional level



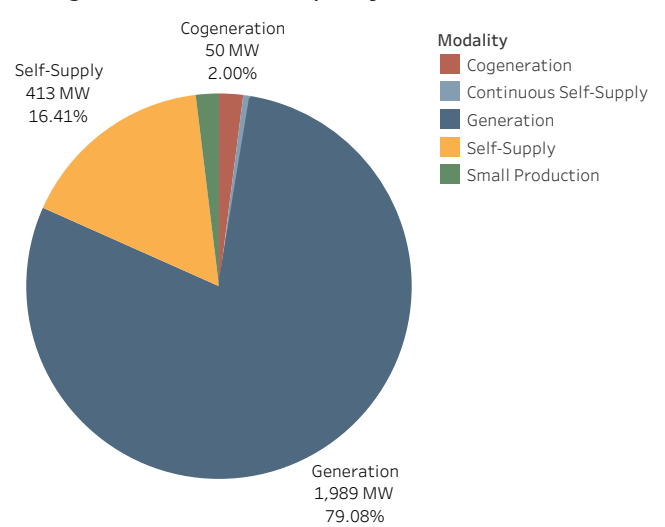
### Generation

Puebla has **1,205 MW of capacity in operation** and is expected to develop another **1,311 MW** in the near future. By November 2020, there were **57 generation permit holders** in the state, of which **79%** are projects that resulted from the Electric Industry Law (LIE) in 2014 and **21%** are Legacy Projects, based on their authorized capacity. Of the total generation projects **715 MW or 28%** correspond to CFE plants.

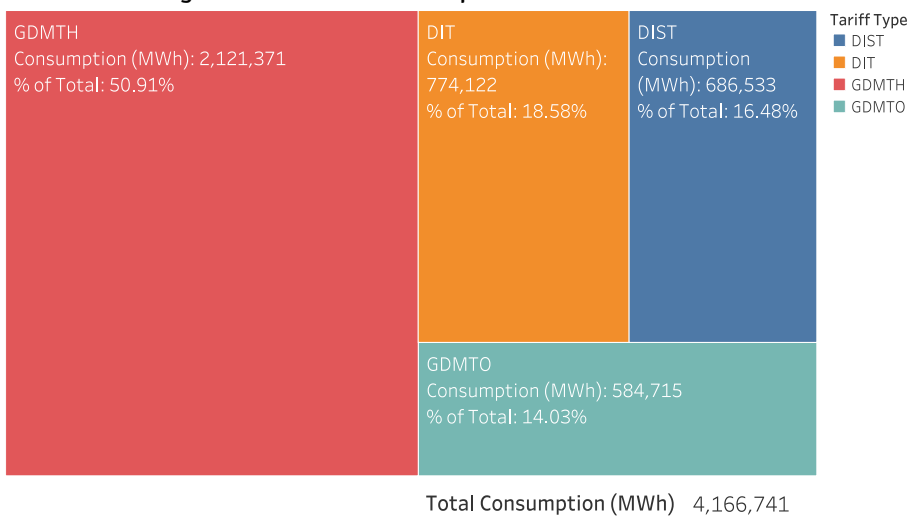
**Figure 1: Capacity in Operation**



**Figure 2: Authorized Capacity**



**Figure 3: CFE SSB Consumption Jan 2020 – Jan 2021**



### Demand - Basic Service Users



When analyzing CFE SSB C&I users, Puebla ranks as the **13<sup>th</sup>** state with regard to its **average consumption (MWh)**.



# Puebla

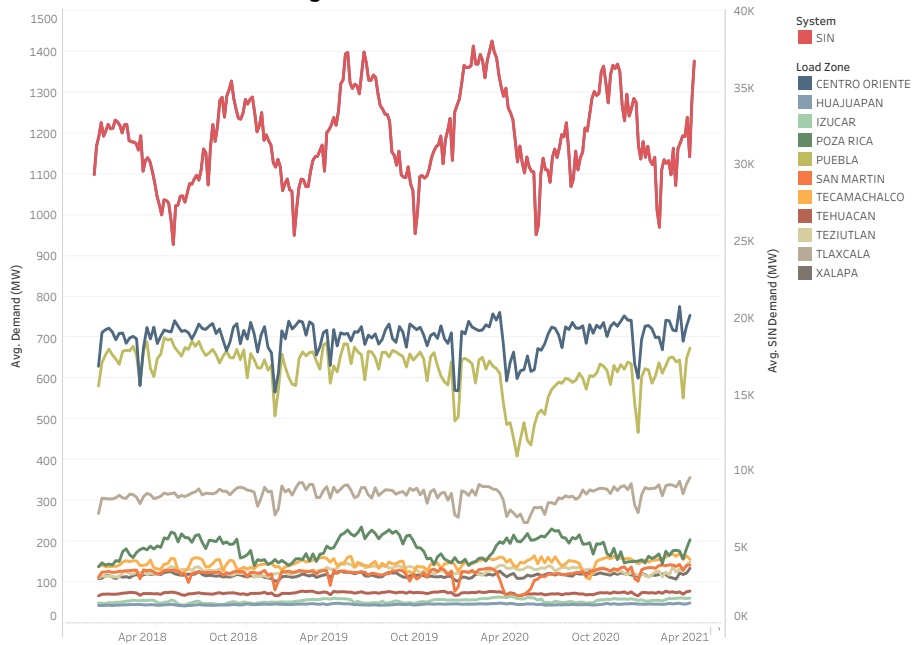
## April, 2021



### Demand - MEM

The following graph shows the historic behavior of demand in the SIN (National Interconnected System), which peaks in the summer and reaches its lowest level in the winter. Two of Puebla's Load zones (Centro Oriente and Puebla) represent the bulk of the demand within the state. In sum, Puebla's load zones represented 7.66% of the total demand in the SIN from January to April 2021.

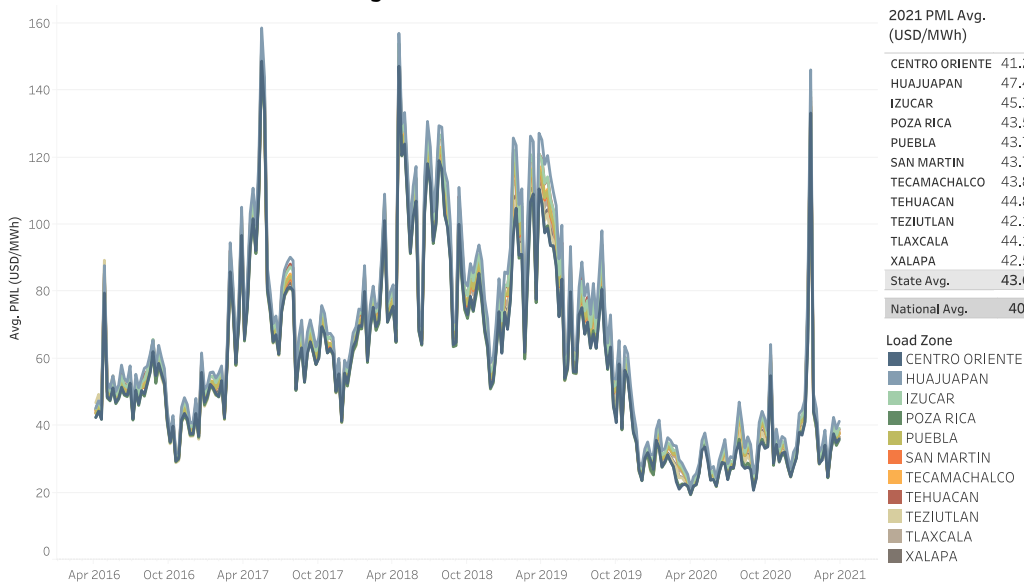
Figure 4: Historic SIN Demand



### Prices - PML

During 2021, the Local Marginal Prices (PML) have shown similar values to those observed in 2020, excluding a peak in early February caused by a gas shortage in the South of the US. In the load zones within Puebla, the PML has shown very similar values to the nation-wide average that started to recover during recent months. From January to April 2021, Puebla had a PML slightly above the national average with a value of 43.61 USD/MWh.

Figure 5: Historic PML Behavior





## Prices – CFE SSB Tariffs

The following graph shows the average tariff of the variable energy component that CFE SSB has charged to its large-scale and industrial users (GDMTH, DIT and DIST) throughout 2021. Across the country, this rate has decreased by approximately 3.2% from 2020 to 2021. During 2021, Puebla has ranked as the 16<sup>th</sup> state regarding its average tariff.<sup>1</sup>

Figure 6: 2021 CFE SSB Heat Map



<sup>1</sup> Note that Baja California and Baja California Sur have been omitted to allow for a better visualization of the rest of the map as they present the lowest (27.94 USD/MWh) and highest (107.07 USD/MWh) average tariffs in the country, respectively.