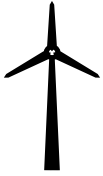




Puebla

January, 2021

Power sector analysis at a regional level



Generation

Puebla has **1,205 MW** of capacity in operation and is expected to develop another **1,311 MW** in the near future. By June 2020, there were **57 generation permit holders** in the state, of which **79%** are projects that resulted from the Electric Industry Law (LIE) in 2014 and **21%** are Legacy Projects, based on their authorized capacity. Of the total generation projects **715 MW** or **28%** correspond to CFE plants.

Figure 1: Capacity in Operation

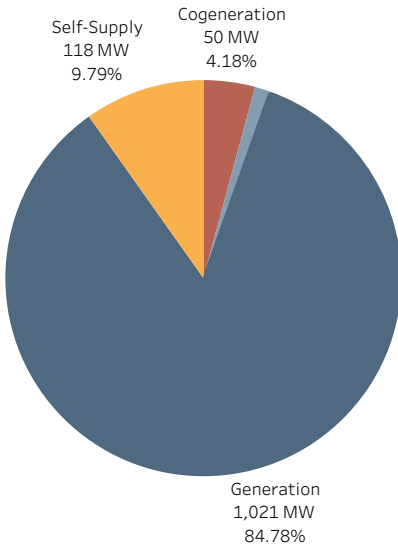


Figure 2: Authorized Capacity

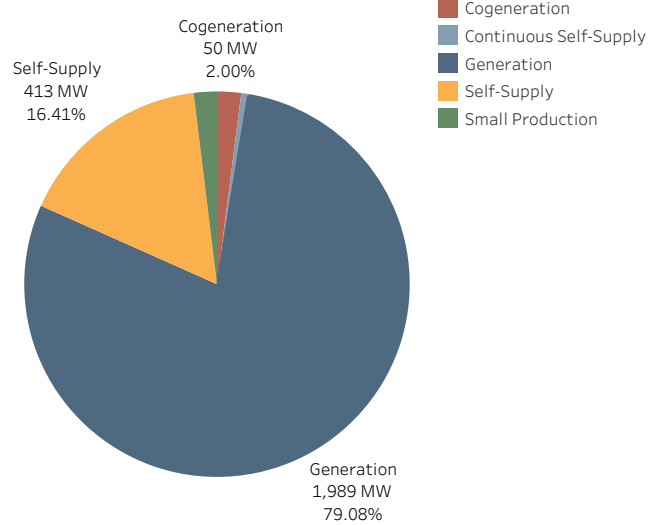
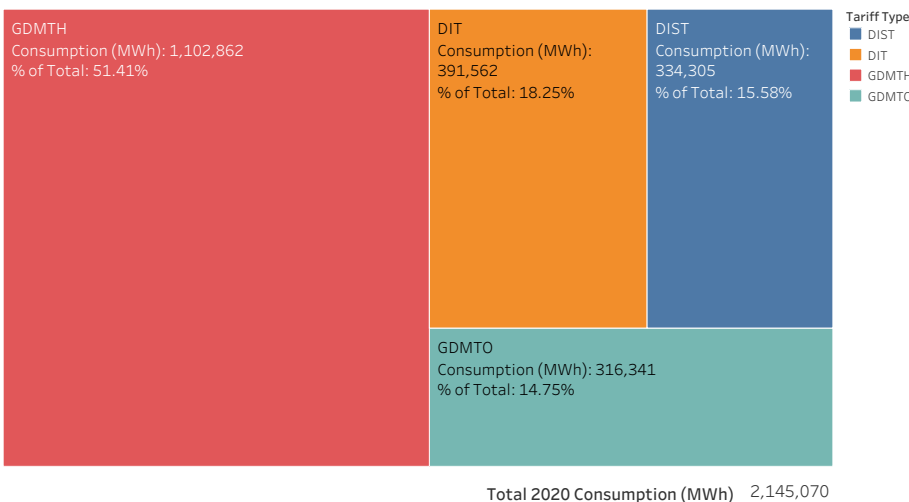


Figure 3: CFE SSB 2020 Consumption



Demand - Basic Service Users



When analyzing CFE SSB C&I users, Puebla ranks as the **12th** state with regard to its **average consumption (MWh)**.



Puebla

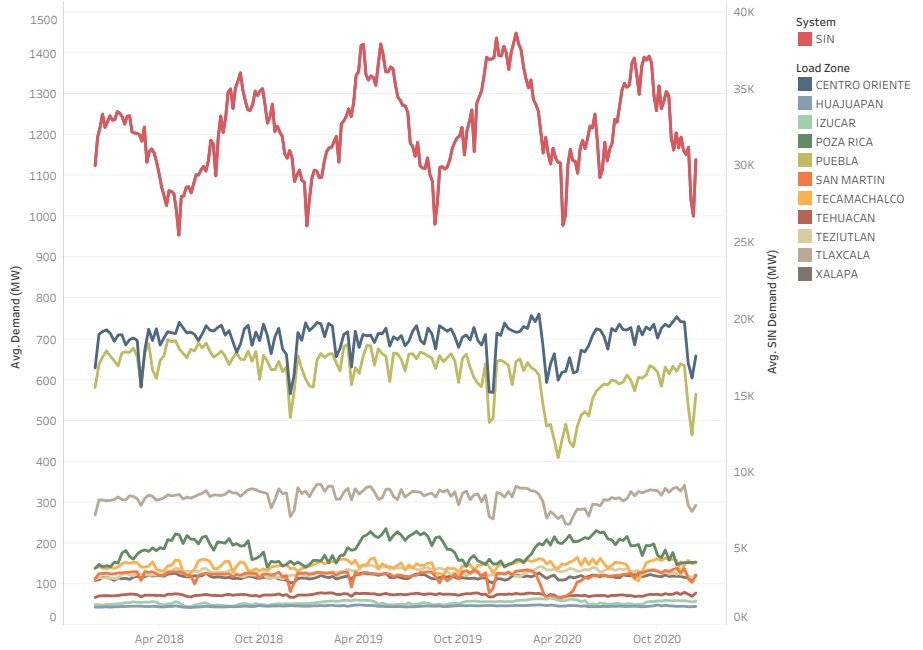
January, 2021



Demand - MEM

The following graph shows the historic behavior of demand in the SIN (National Interconnected System), which peaks in the summer and reaches its lowest level in the winter. Two of Puebla's Load zones (Centro Oriente and Puebla) represent the bulk of the demand within the state. In sum, Puebla's load zones represented **7.15% of the total demand in the SIN** during 2020.

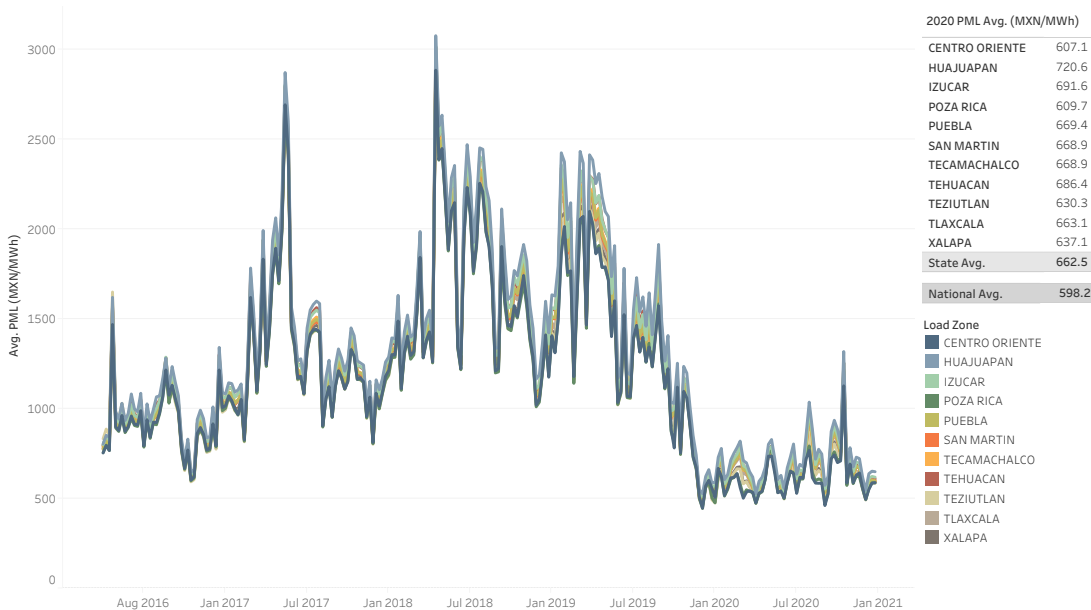
Figure 4: Historic SIN Demand



Prices - PML

The Local Marginal Prices (PML) have decreased substantially during 2020. In the load zones within Puebla, the PML has shown very similar values to the nation-wide average that started to recover during recent months. During 2020, Puebla had a PML slightly above the national average with a value of **662.5 MXN/MWh**.

Figure 5: Historic PML Behavior





Puebla

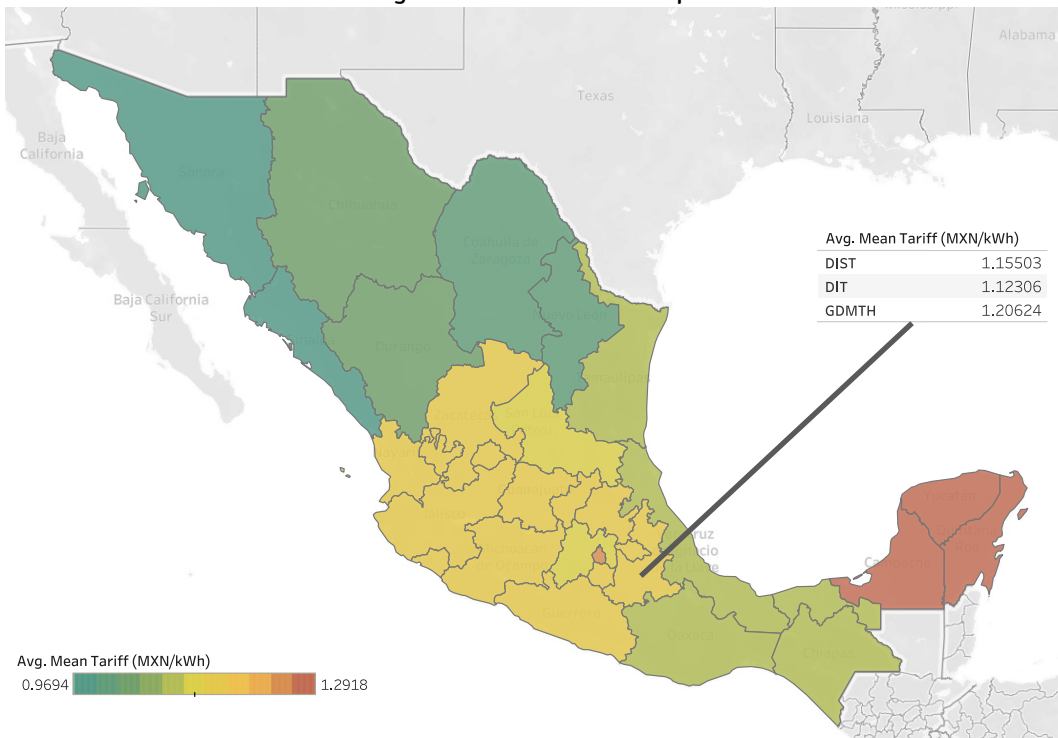
January, 2021



Prices – 2020 CFE SSB Tariffs

The following graph shows the average tariff of the variable energy component that CFE SSB has charged to its large-scale and industrial users (GDMTH, DIT and DIST) throughout 2020. During of 2020, Puebla has ranked as the 16th state regarding its average tariff.¹

Figure 6: CFE SSB Heat Map



¹ Note that Baja California and Baja California Sur have been omitted to allow for a better visualization of the rest of the map as they present the lowest (0.561 MXN/kWh) and highest (2.140 MXN/kWh) average tariffs in the country, respectively.